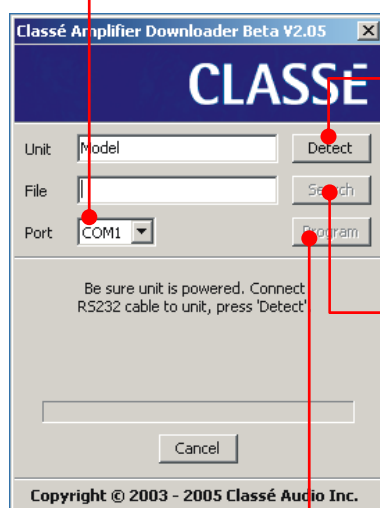


1. Read the Software Release notes to confirm that the download is necessary
2. If you have not already done so, save the "Amplifier\_Downloader.exe" and the appropriate ".hex" file from the Classe website on to your PC's desktop \*. **When saving the .hex file ensure that the "Save as type" in the windows browser is set to "All files". Some versions of windows default to "Text Document" as the "Save as type". Saving the Hex file as a Text Document will result in update failure.** \*CA-5200, CA-3200, CA-2200, CA-2100 and CA-M400 require "D-AMP image\_XvXX.hex"; CA-5100 requires "CA5100 image\_XvXX.hex"; Omega-Mono requires "Omega-Mono image\_XvXX.hex".
3. Power up the amplifier.
4. FIRMLY connect the amp to your PC using a pin to pin RS232 cable. Loose cabling can result in a failed update.
5. Double click on the <Classe Amplifier\_Downloader.exe>. The screen below will appear...

- 6 Select the COM port that the RS-232 cable is connected to.  
\*If you only have one RS232 port at the back of your PC, you should select COM1. If you have more than one RS232 port at the back of your PC, or if you are using a USB to RS232 adaptor then you should select the appropriate input.  
Information on the appropriate input can be accessed via the following path on your PC: START - SETTINGS - CONTROL PANEL - SYSTEM - HARDWARE - DEVICE MANAGER - PORTS



7 Click <Detect>. The software will now confirm the unit model and serial number

8 Click <Search>. The software will automatically present a menu of appropriate files. Double click on the file relating to this update.

9 Click <Program>

10. Remove the power cord from the back of the amplifier, wait 5 seconds, then FIRMLY replace it (loose cabling can result in update failure). Once the power cord has been replaced, the update will begin. "Writing flash..." will appear in the status area and the progress bar will activate. *The amplifier's blue Standby LED will not be lit during this process*
11. When "Programming Complete" appears in the status area, the Blue standby LED will light up. **IF THE BLUE STANDBY LED DOES NOT LIGHT WHEN THE DOWNLOAD IS COMPLETE THEN THE UPDATE HAS FAILED, DISABLING THE FRONT PANEL. IF THIS HAPPENS PLEASE PROCEED TO STEP 13 – "RESOLVING FAILED UPDATES"**
12. When the standby LED is lit, unplug the Amplifier and disconnect the RS-232 cable. When you next plug in the Amplifier, the unit will be updated

13. In the event of a failed update you will be unable to power up the amplifier. This is not a major issue and can be resolved by the following procedure
14. Disconnect the amplifier AC line cord – *LEAVE IT DISCONNECTED UNTIL YOU REACH STEP 24.*
15. Ensure that the RS-232 cable is firmly connected to both your PC and you amp. *The most likely cause of a failed update is a loose RS-232 connection between your PC and your amp*
16. Close the Amplifier Downloader then re-open it
17. Ensure that you have selected the correct COM Port
18. Click on DETECT
19. "UNIT NOT FOUND" will appear in the downloader "UNIT" box because the amplifier is not powered up.
20. Click on SEARCH
21. A browser window will open. Use this to go to the location where you saved the .hex file. Unlike the first software update attempt, the software will not automatically narrow down your search. You will have to carefully identify the correct .hex file, then select it.
22. The .hex file name will appear in the downloader "FILE" box
23. Click on PROGRAM
24. Connect the amplifier AC line cord and the download will recommence. The Blue Standby LED will not be lit during this process
25. When the download completes, the Blue standby LED will light
26. When the Blue standby LED is lit, disconnect the AC line cord and the RS-232 cable
27. When you next power up the amplifier it will be updated

## Amendment Records:

V1.5	October 11, 2006	- Change "Amplifier Flasher.exe" to Amplifier Downloader.exe"
------	------------------	---